



Burden of Breast Cancer: a Global Problem with a Local Solution

**International Agency for Research on Cancer
Lyon, France**

Isabelle Soerjomataram

**6th International Congress of Breast Disease Centers
5 February 2016**

Breast Cancer is Important

International Agency for Research on Cancer

Breast Cancer is Important



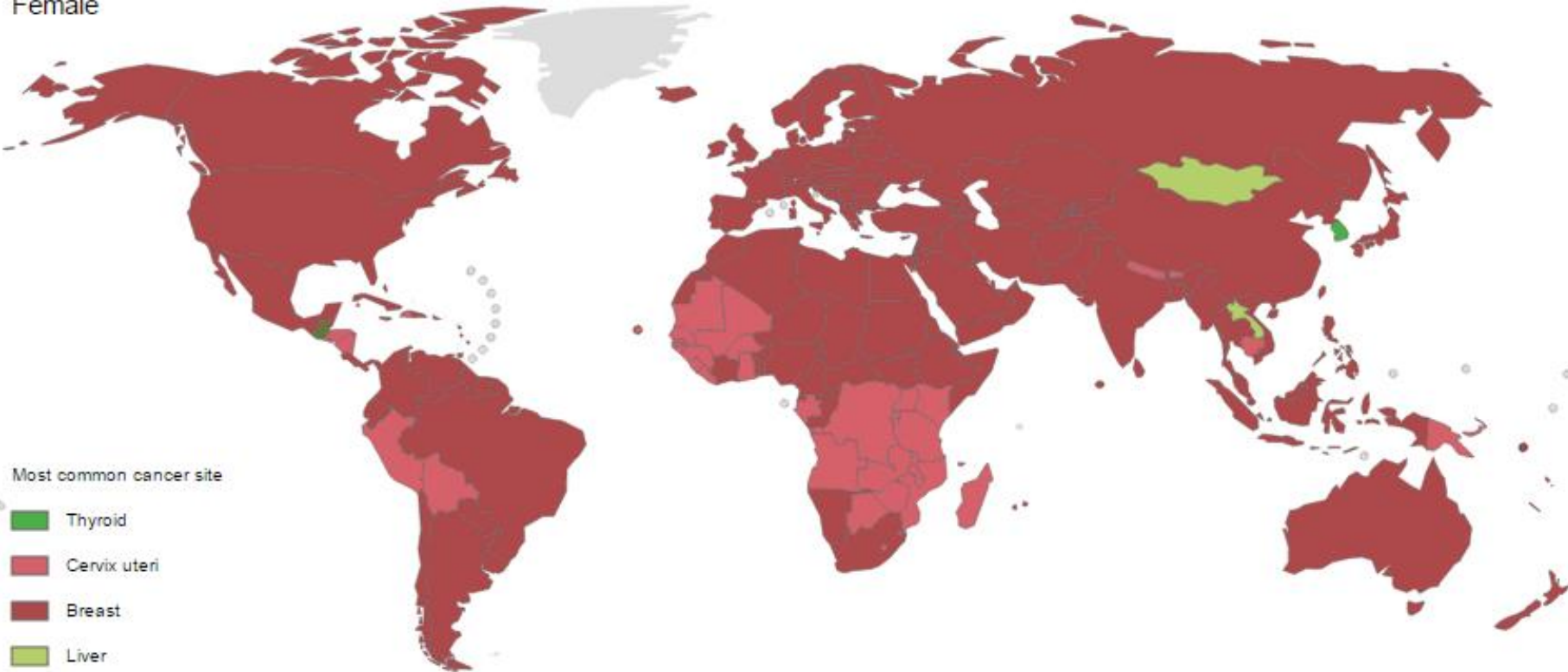
EVERYWHERE[®]

[International Agency for Research on Cancer](#)

Number 1 in many countries

Incidence ASR

Female



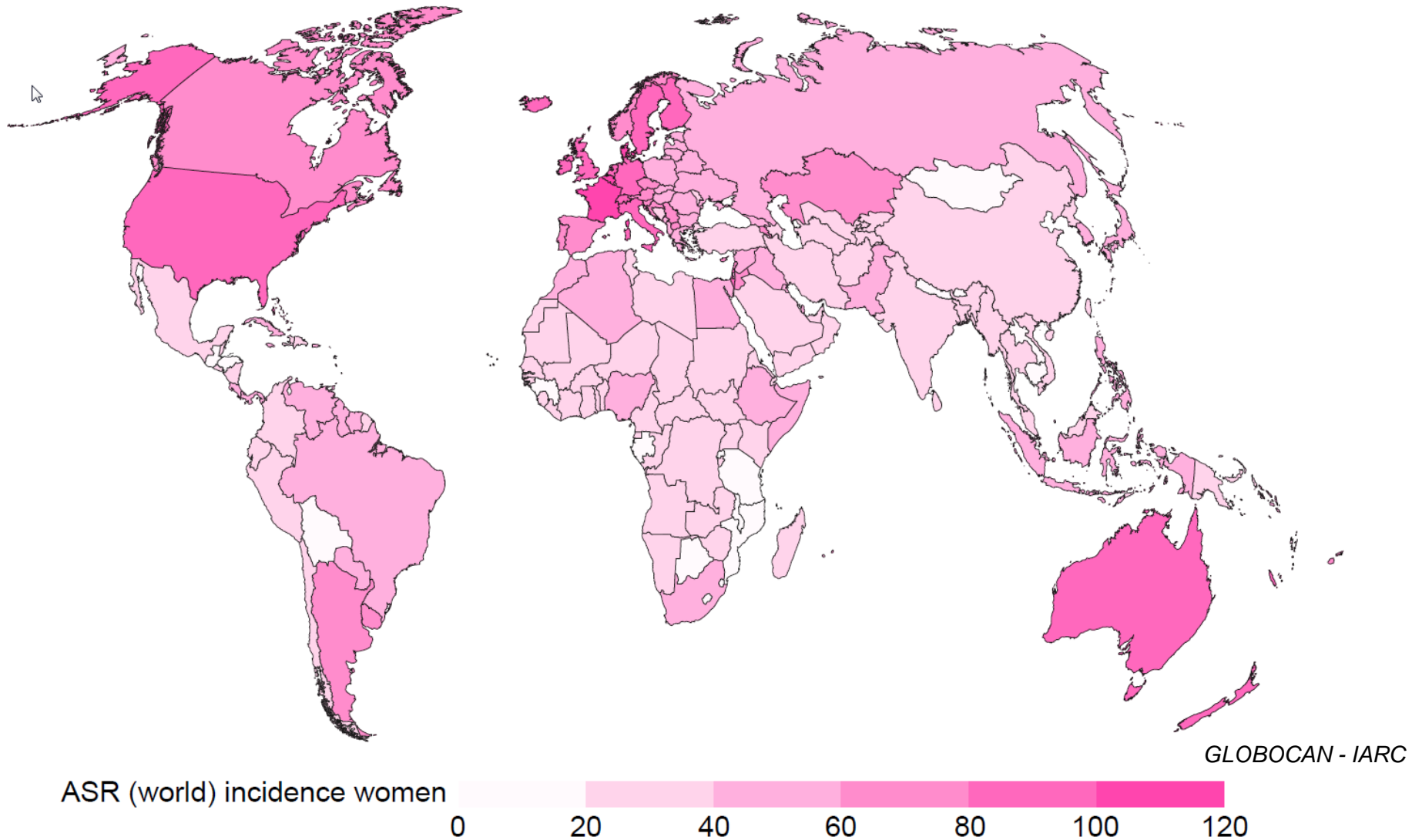
Most common cancer site

- Thyroid
- Cervix uteri
- Breast
- Liver
- Stomach
- No Data

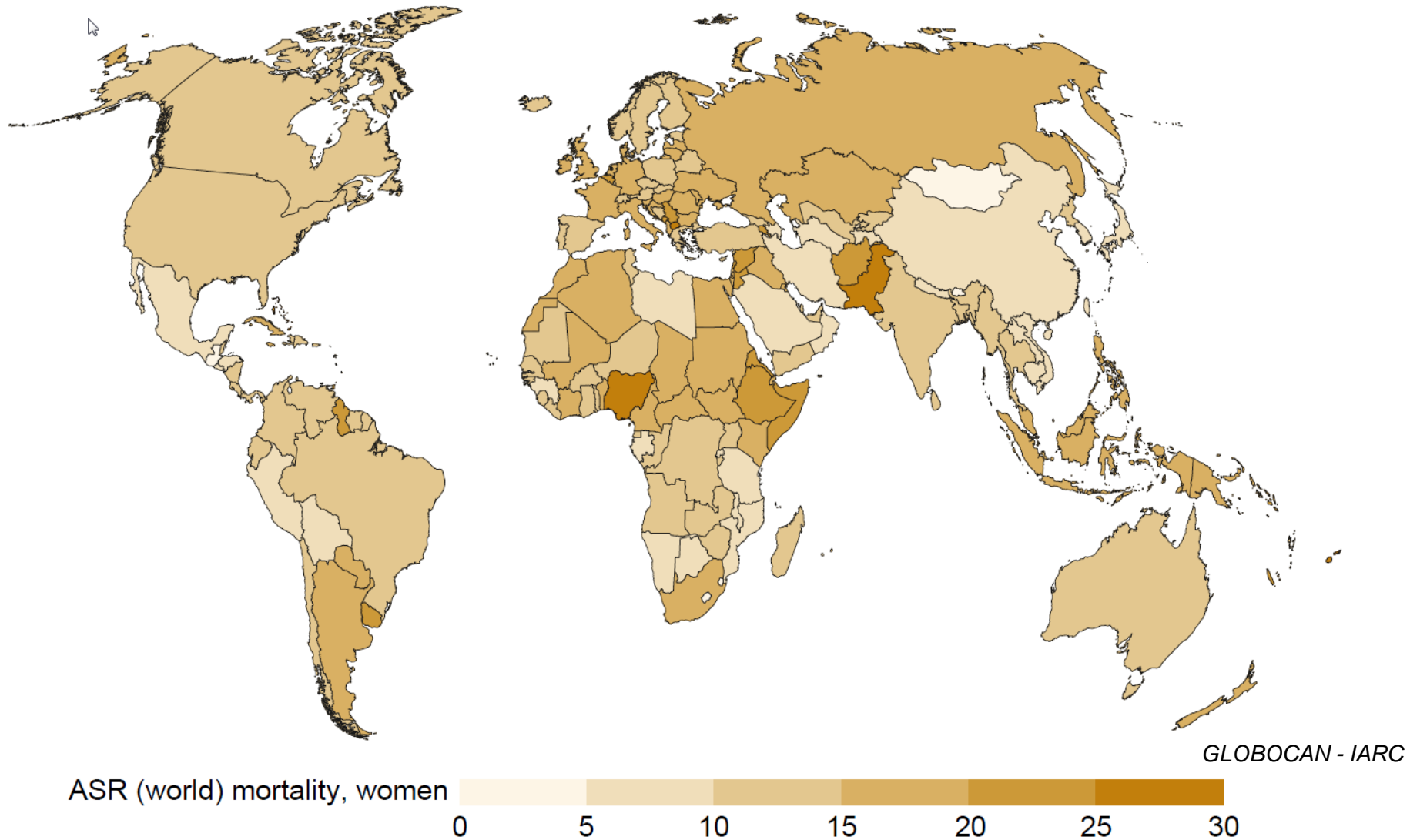
International Agency for Research on Cancer



Breast Cancer : New cases



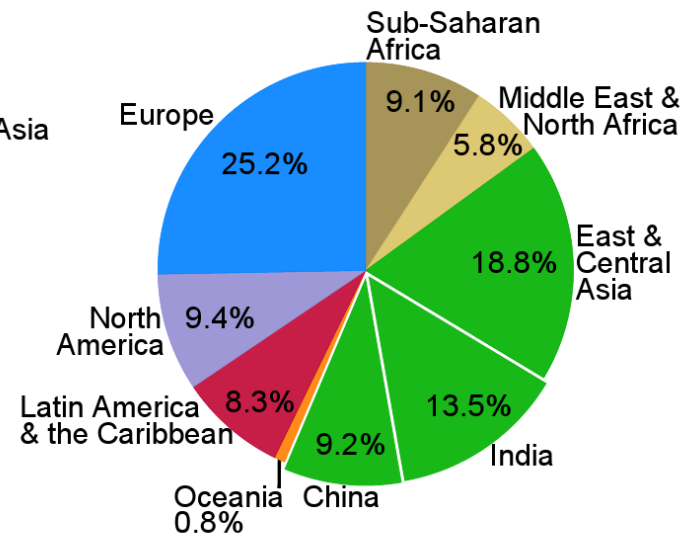
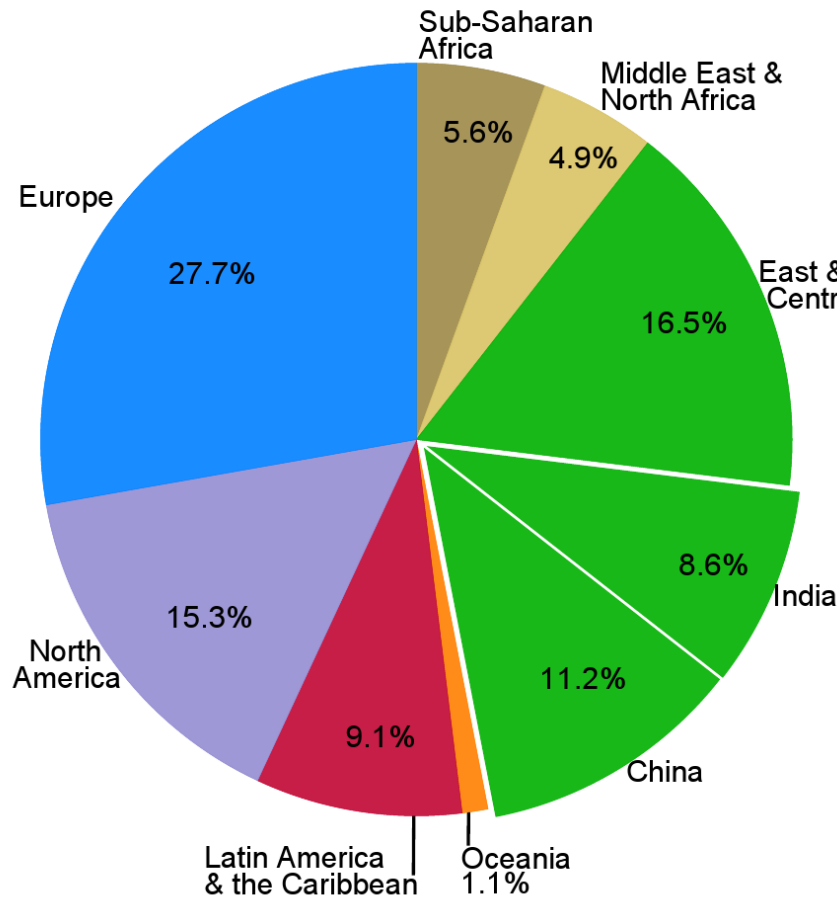
Breast Cancer : Deaths



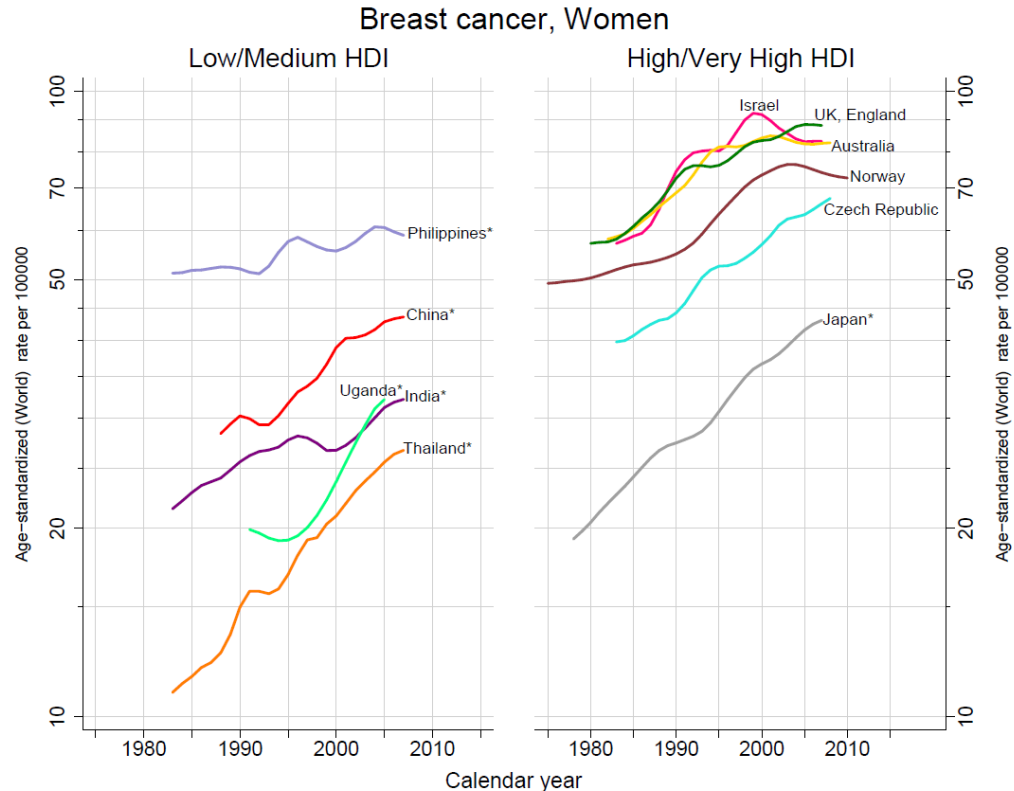
Breast Cancer by World Region

Incidence: 1.7 million estimated new cases

Mortality: 522 000 estimated deaths

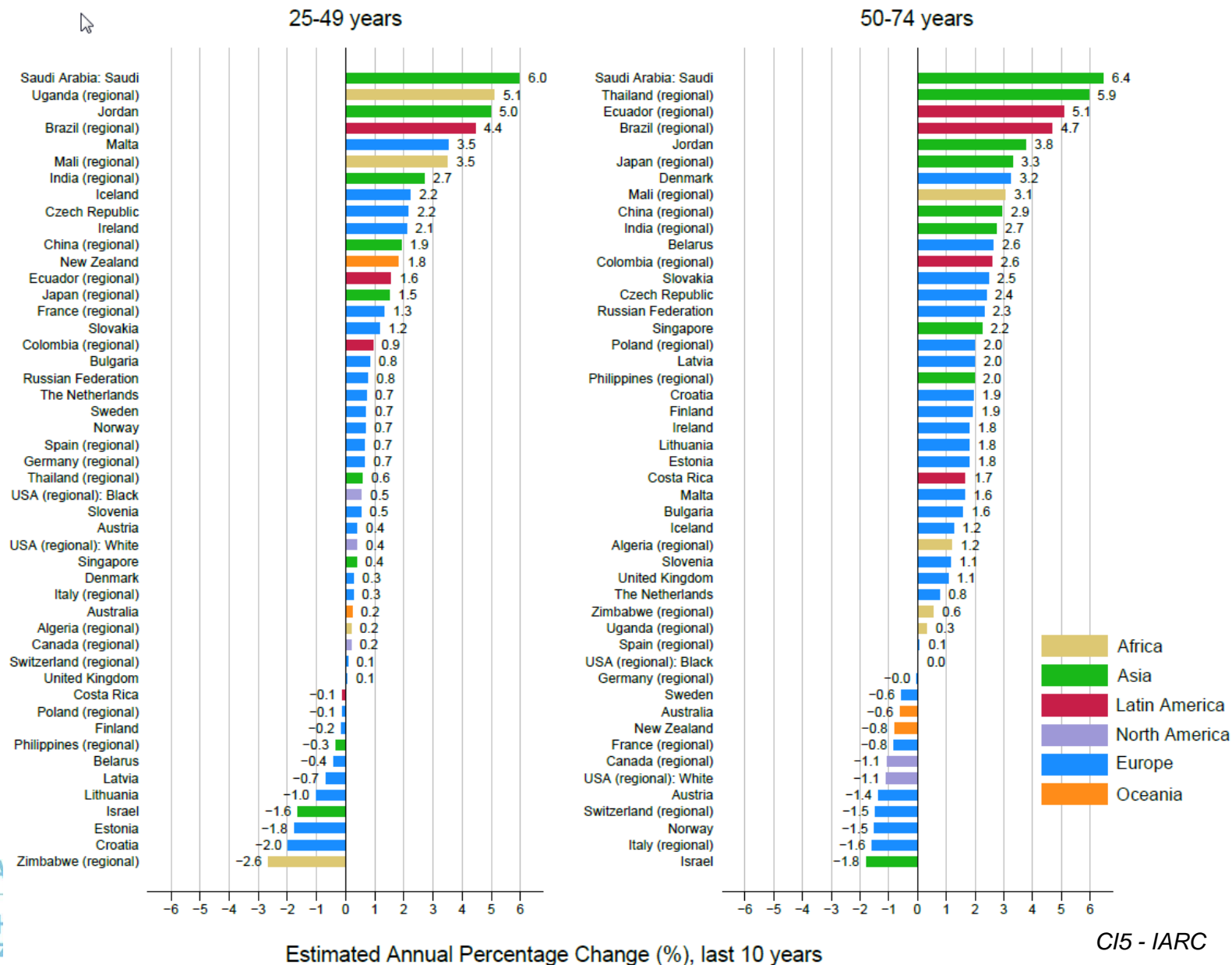


Breast Cancer: Where are you going?

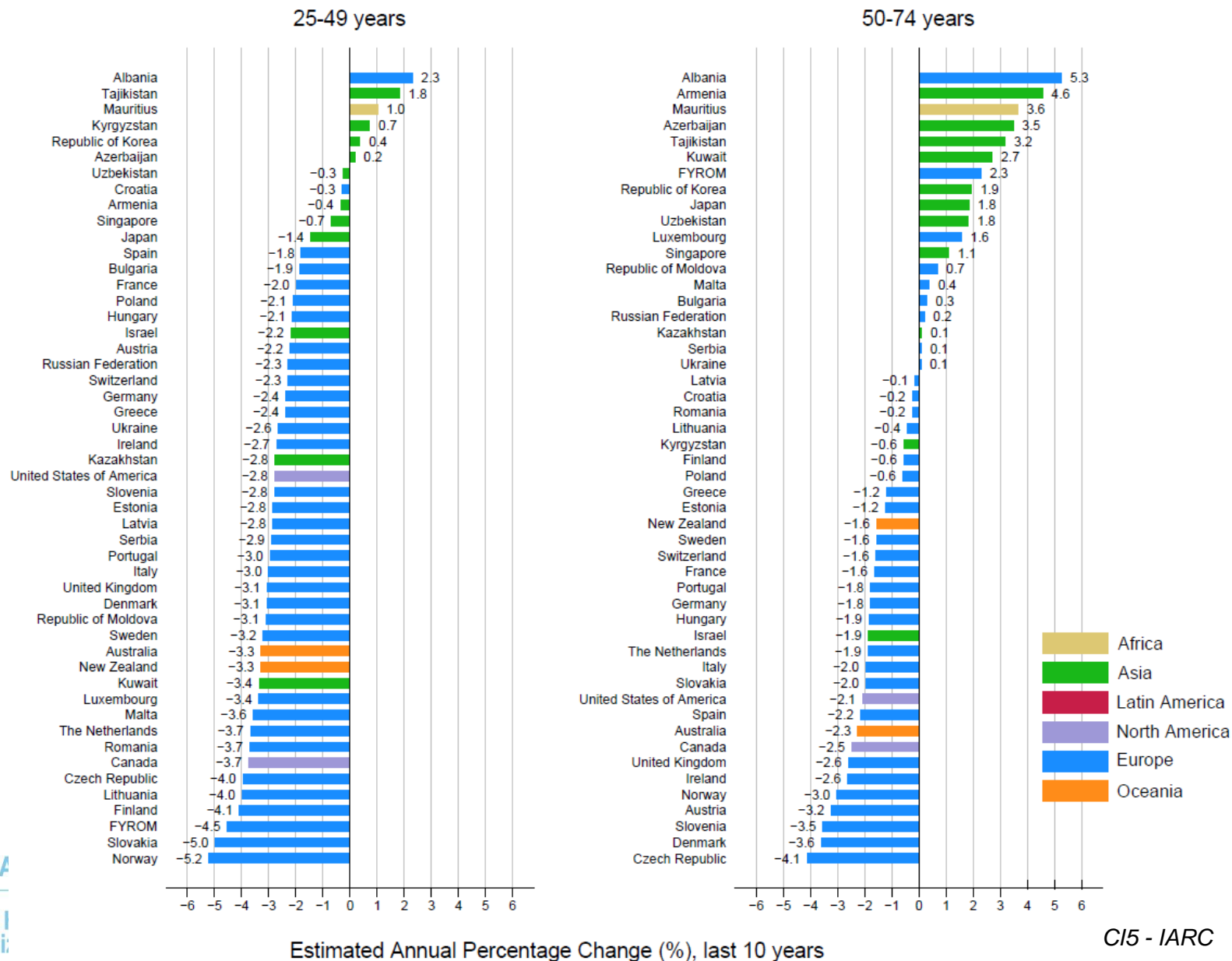


*: China (Hong-Kong and Shanghai), India (Chennai and Mumbai), Philippines (Manila), Japan (Miyagi, Nagasaki and Osaka), Thailand (Chiang Mai), Uganda (Kampala)

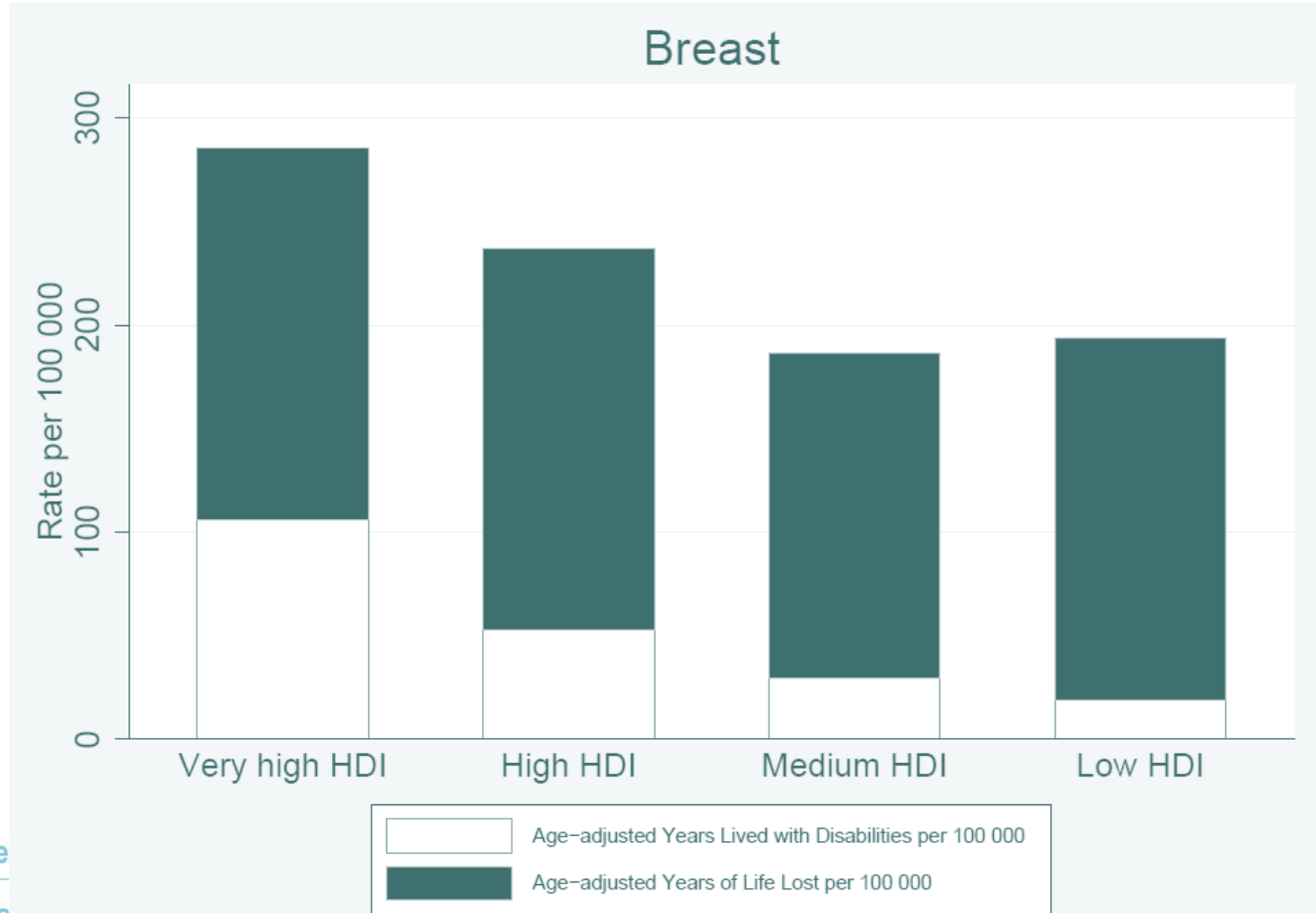
New Cases: Recent trends by age



Deaths: Recent trends by age



Improved survival: (Local) Implication on Care



(Local) Causes: Implication on Prevention

(Local) Causes: Implication on Prevention



Breastfeeding

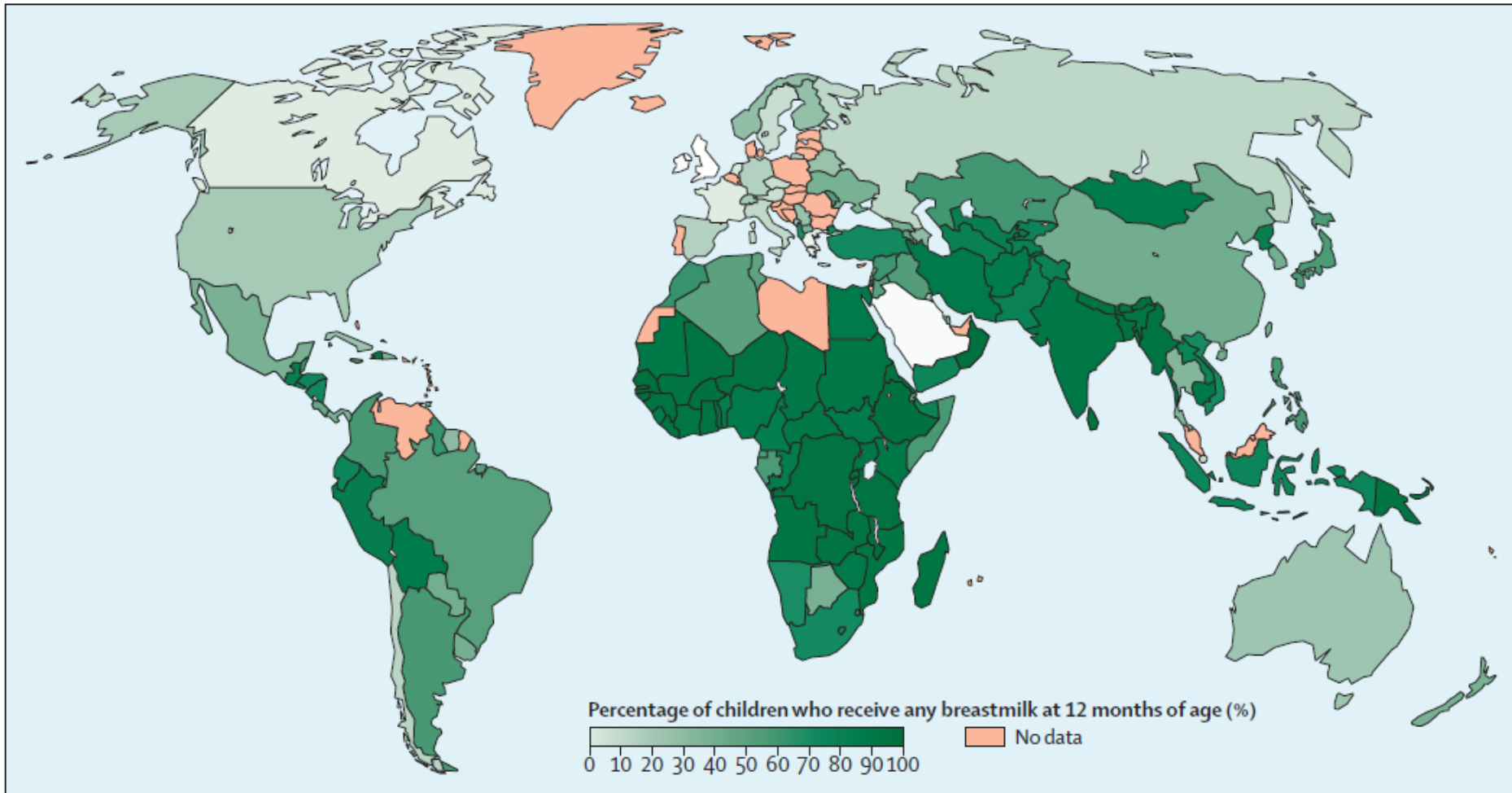


Figure 1: Global distribution of breastfeeding at 12 months
Data are from 153 countries between 1995 and 2013.

Breastfeeding by Income Level

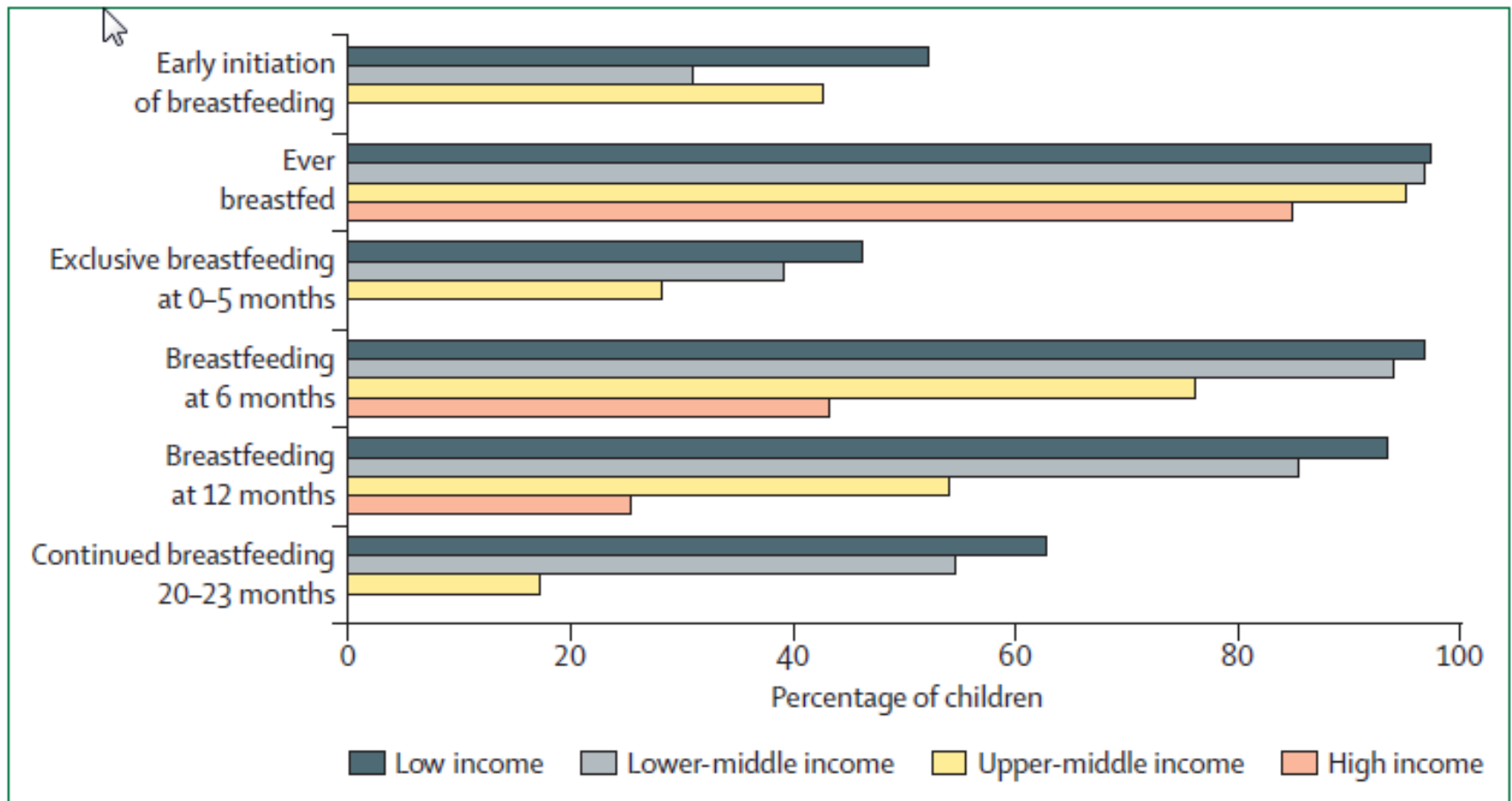


Figure 2: Breastfeeding indicators by country income group in 2010

Data are from national surveys that used standard indicators, and were weighted by national populations of children under 2 years. Data for up to 153 countries.

Breastfeeding and Breast Cancer

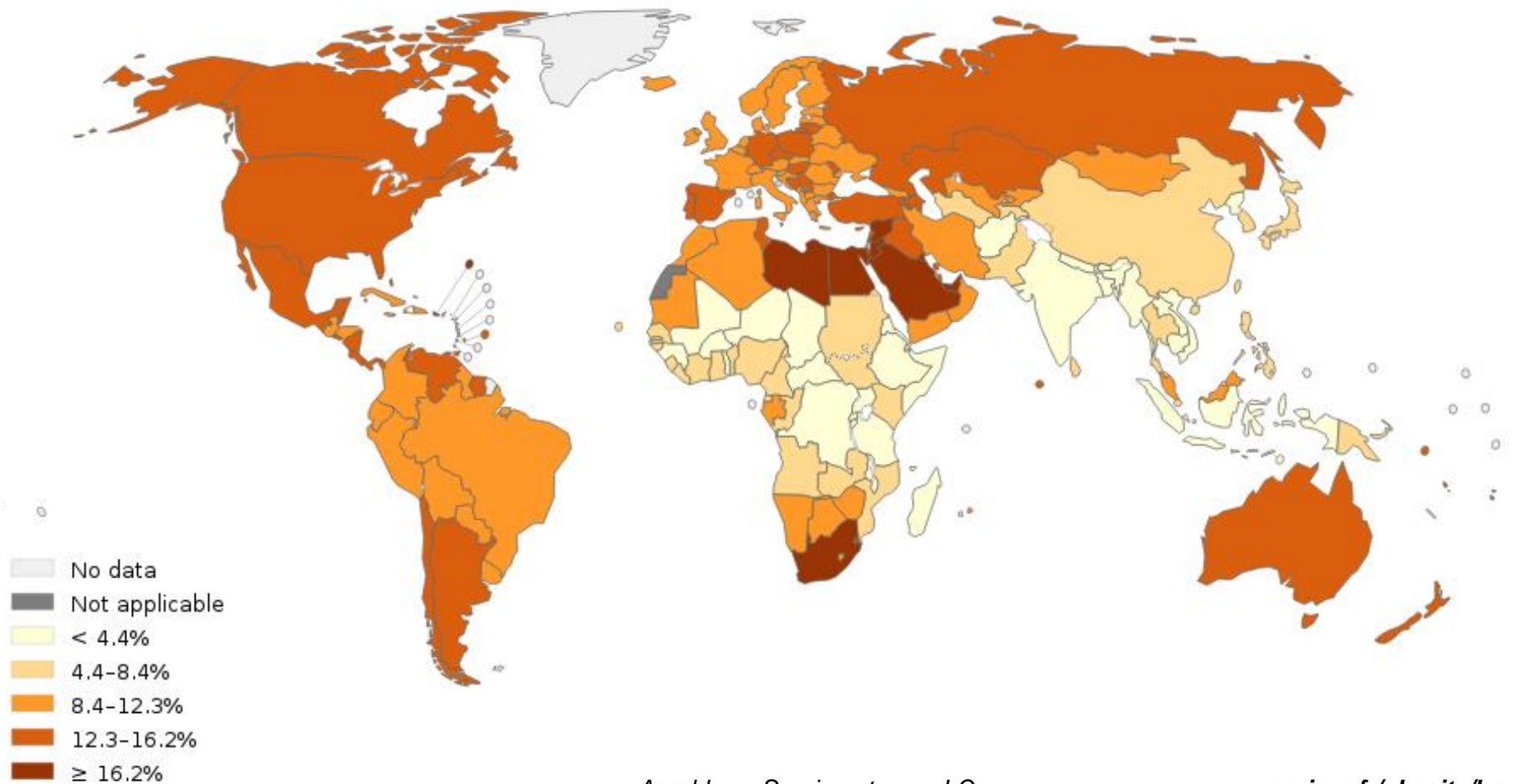
Today :
20,000 averted deaths

Tomorrow:
20,000 preventable deaths

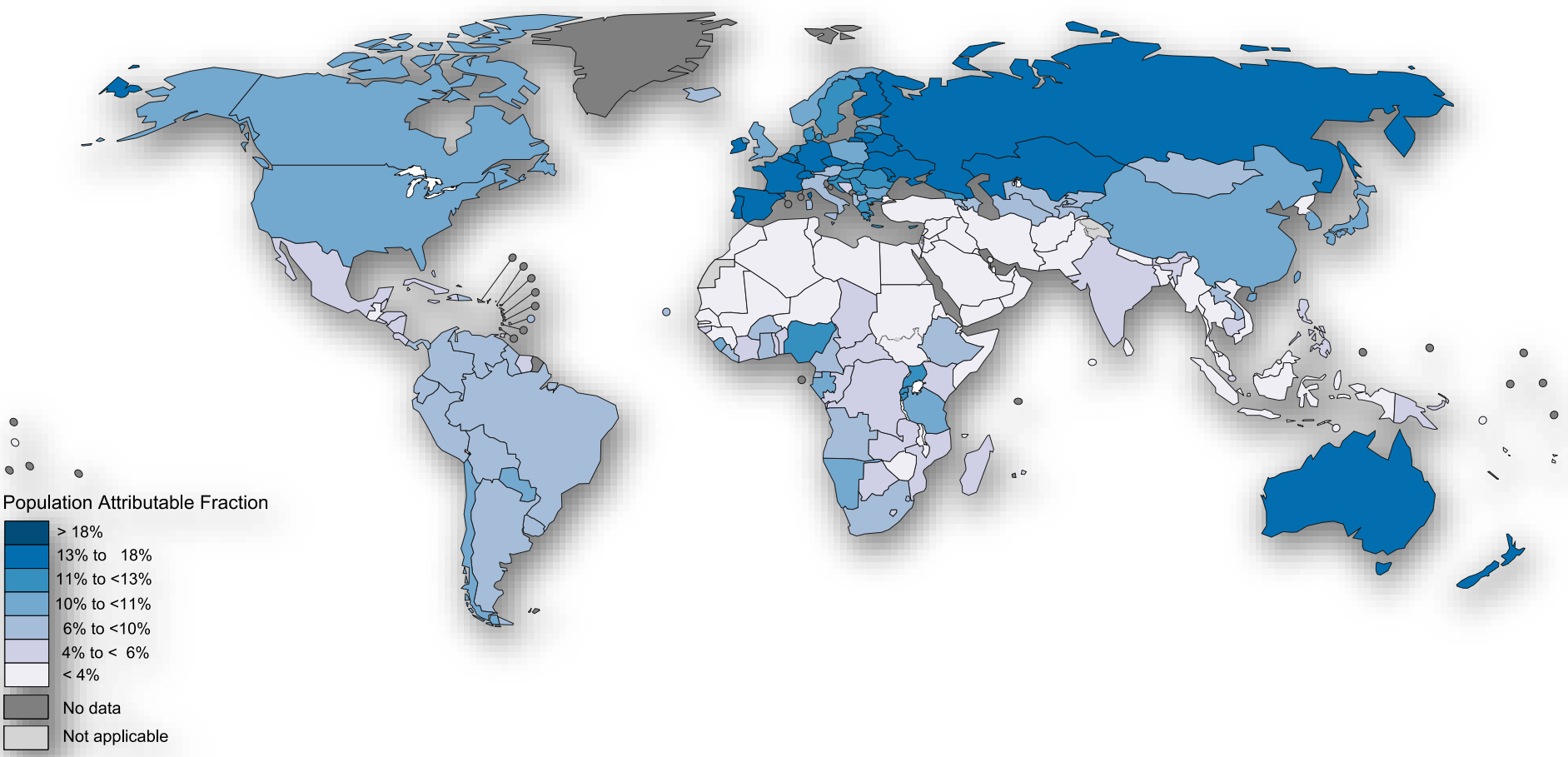


Excess Weight and Breast Cancer

Fraction (%) of all postmenopausal breast cancer cases among both sexes (worldwide) in 2012 attributable to excess body mass index, by country



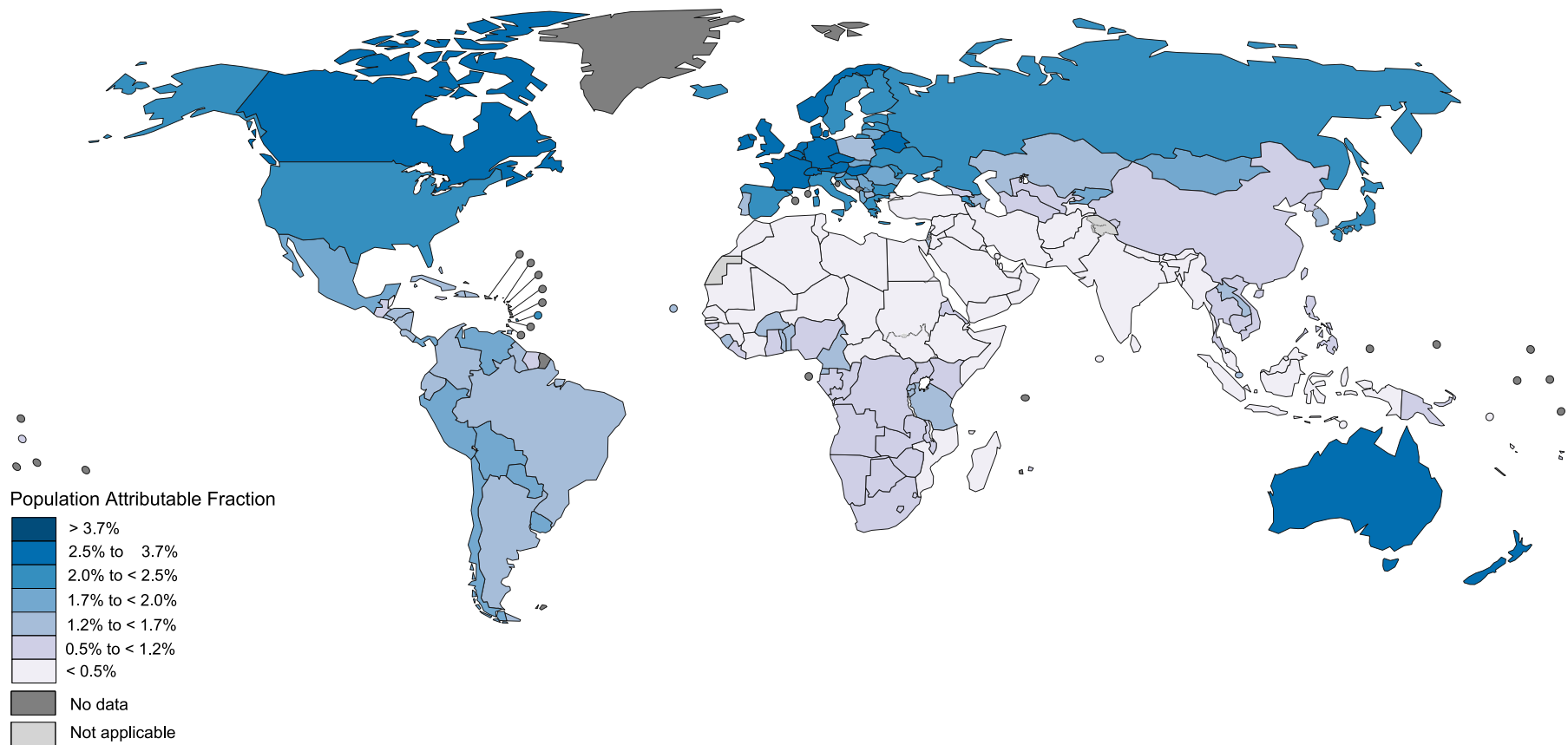
Alcohol Drinking and Breast Cancer



Conclusions: Breast Cancer

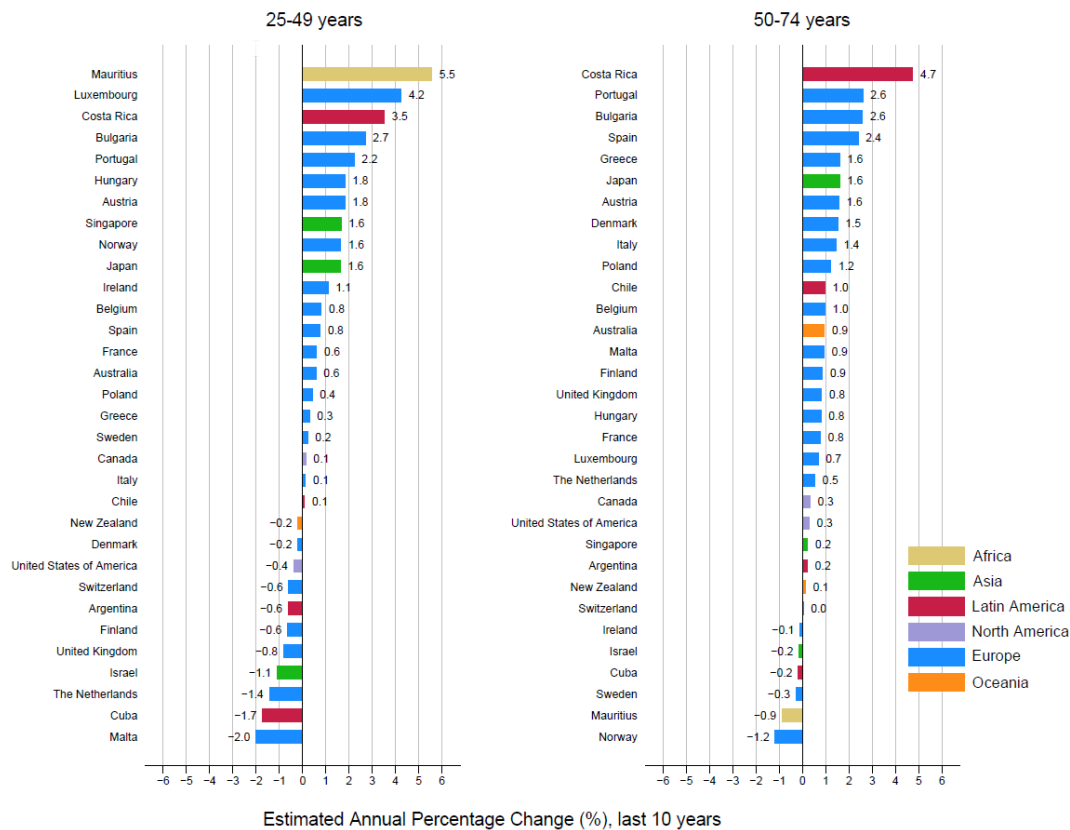
- Important - everywhere
- Incidence is still increasing
 - Risk factors differ → Local prevention strategy
- Mortality is decreasing (for many)
 - Increased long-term survival → Local care strategy
 - If no decrease → Local early detection + adequate treatment strategy

(Light) Alcohol Drinking and Breast Cancer

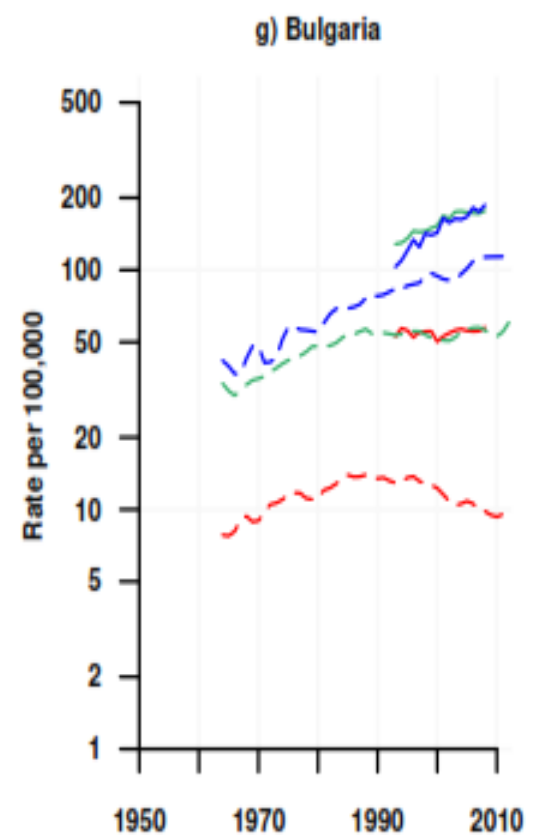
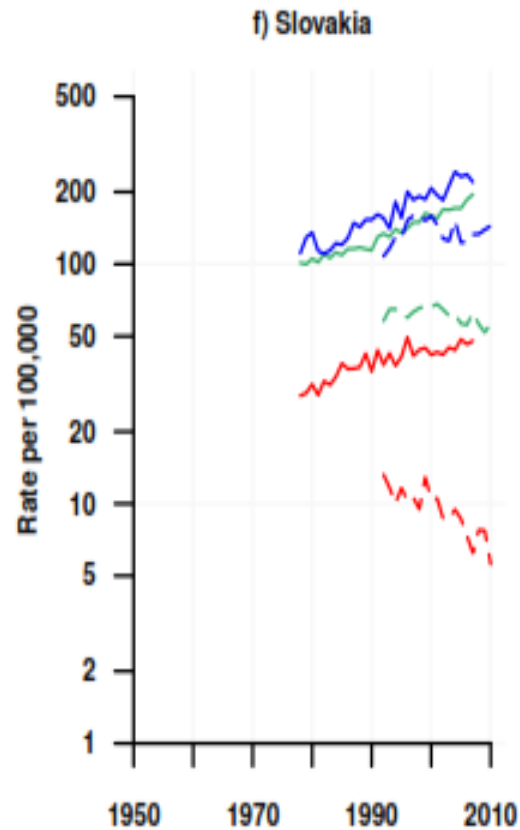
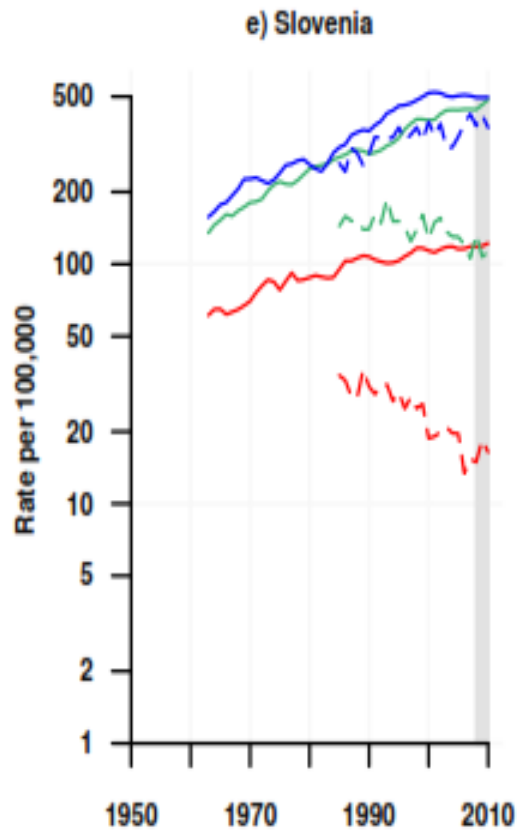


International Agency for Research on Cancer

Breast Cancer Mortality: Past trends by age

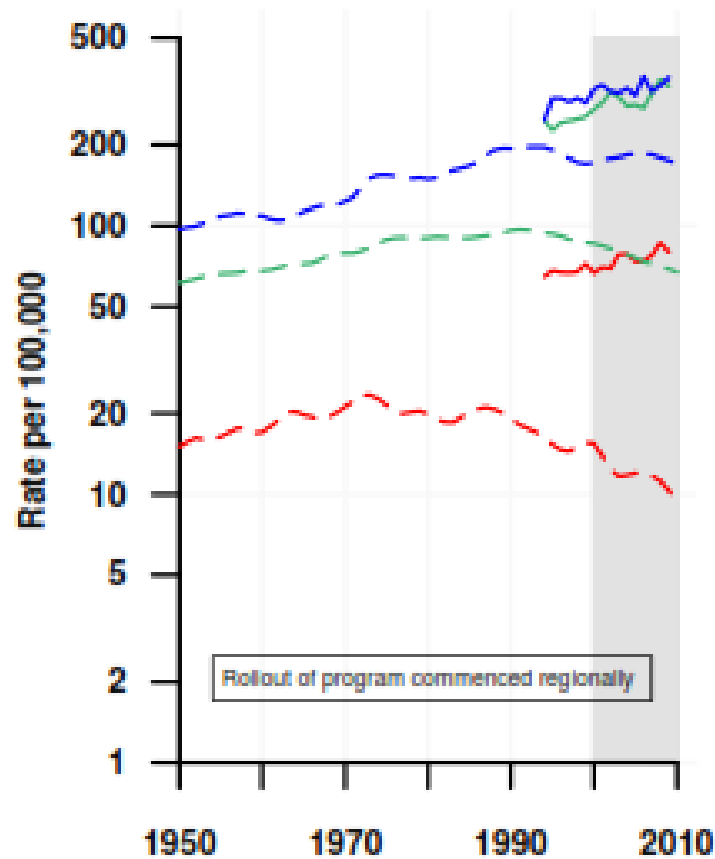


No screening (or not until very recent)

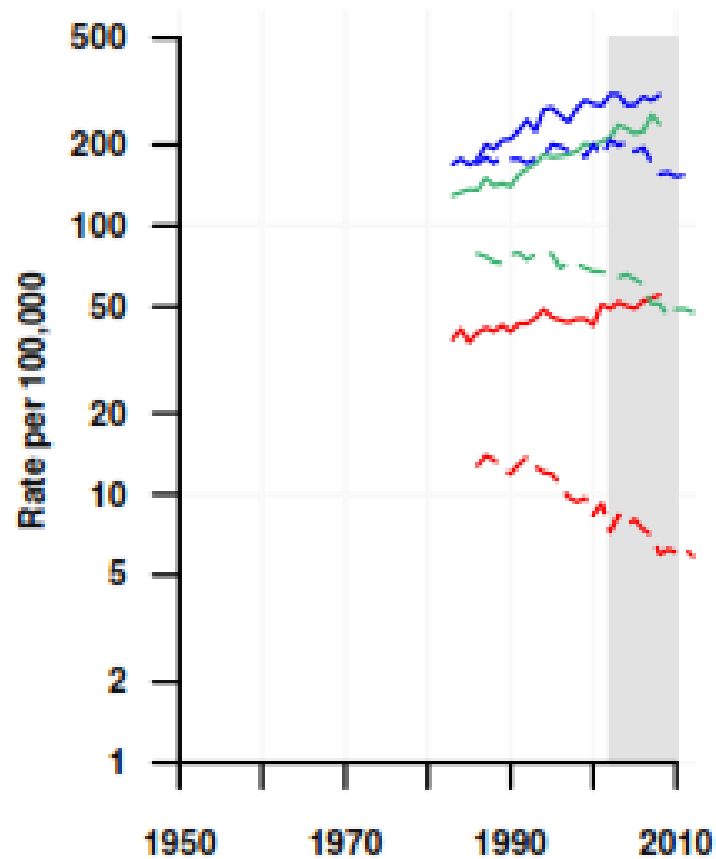


Recent (2000s)

a) Ireland

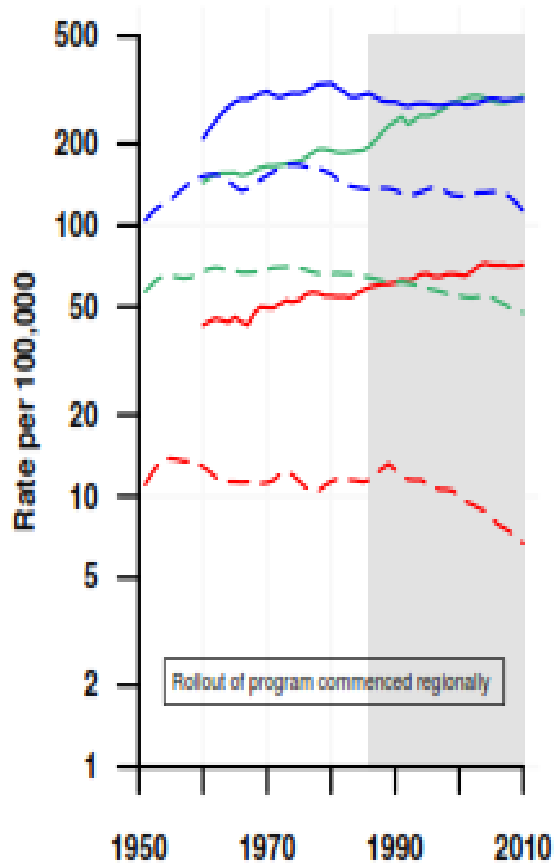


c) Czech Republic

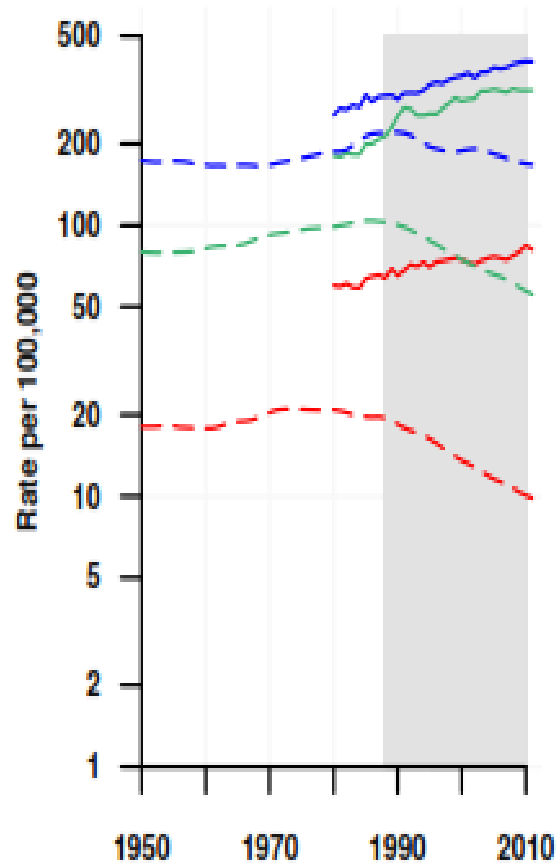


Established (1990s)

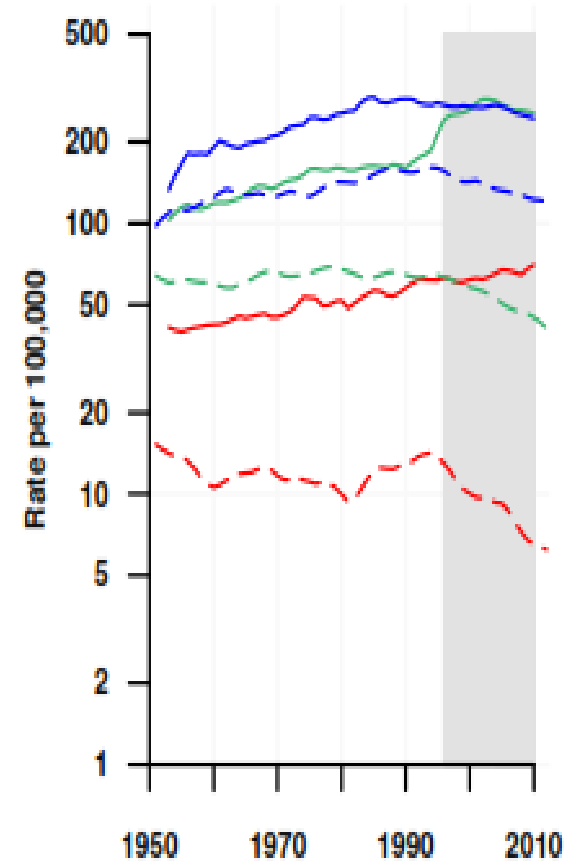
b) Sweden



c) UK, England and Wales



h) Norway



Established (1990s)

